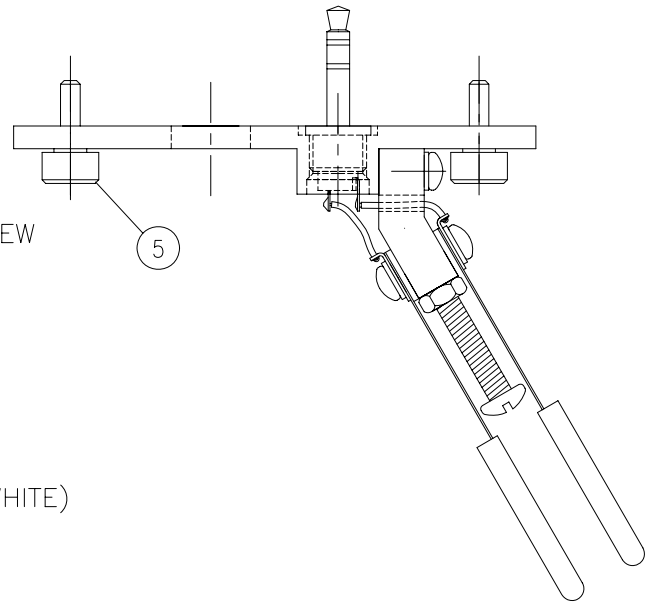


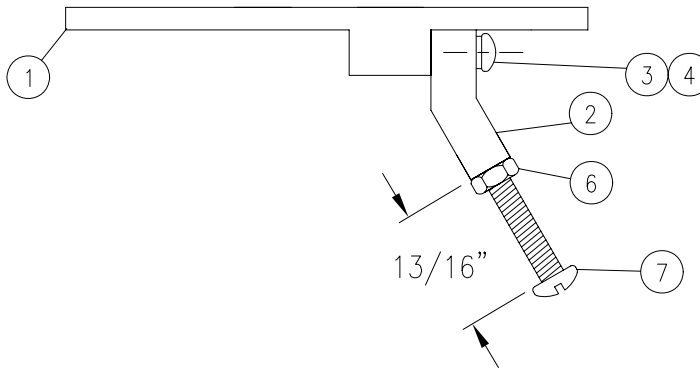
PFR-3 PADDLE ASSEMBLY

PARTS LIST

- 1 - 1@ PFR PADDLE MOUNT, ANGLED
- 2 - 1@ PFR PADDLE SUPPORT
- 3 - 2@ 4-40 X 7/16" PAN HEAD SCREW
- 4 - 2@ 4-40 LOCK WASHER
- 5 - 2@ 4-40 BLACK PLASTIC CAPPED THUMB SCREW
- 6 - 1@ 6-32, 1/4" FLAT NUT
- 7 - 1@ 6-32 X 1" BINDING HEAD SCREW
- 8 - 2@ FLAT VINYL CAP
- 9 - 2@ 5/8" X 1" ALUMINUM SHIMS
- 10 - 4@ 4-40 X 3/16" PAN HEAD PHILIPS SCREW
- 11 - 4@ #4 NYLON STEP WASHER (BLACK)
- 12 - 2@ #6 SOLDER LUG
- 13 - 2@ S.S. PADDLE LEAF
- 14 - 4@ #6 X .03" THICK, NYLON FLAT WASHER (WHITE)
- 15 - 1@ 3.5mm STEREO PLUG
- 16 - 6" 26AWG INSULATED WIRE

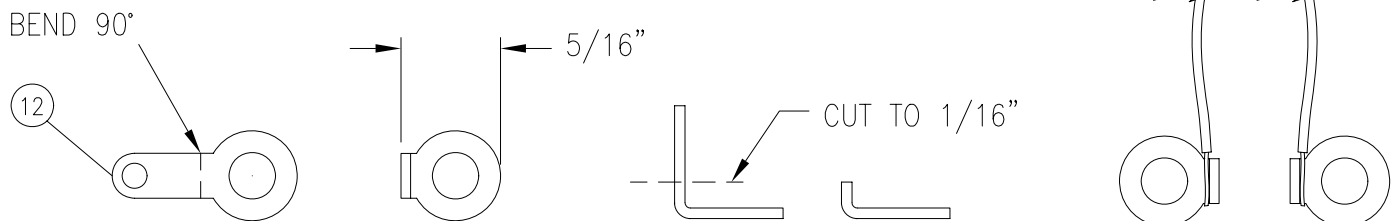


1. CHECK THAT YOU HAVE A COMPLETE SET OF COMPONENTS.



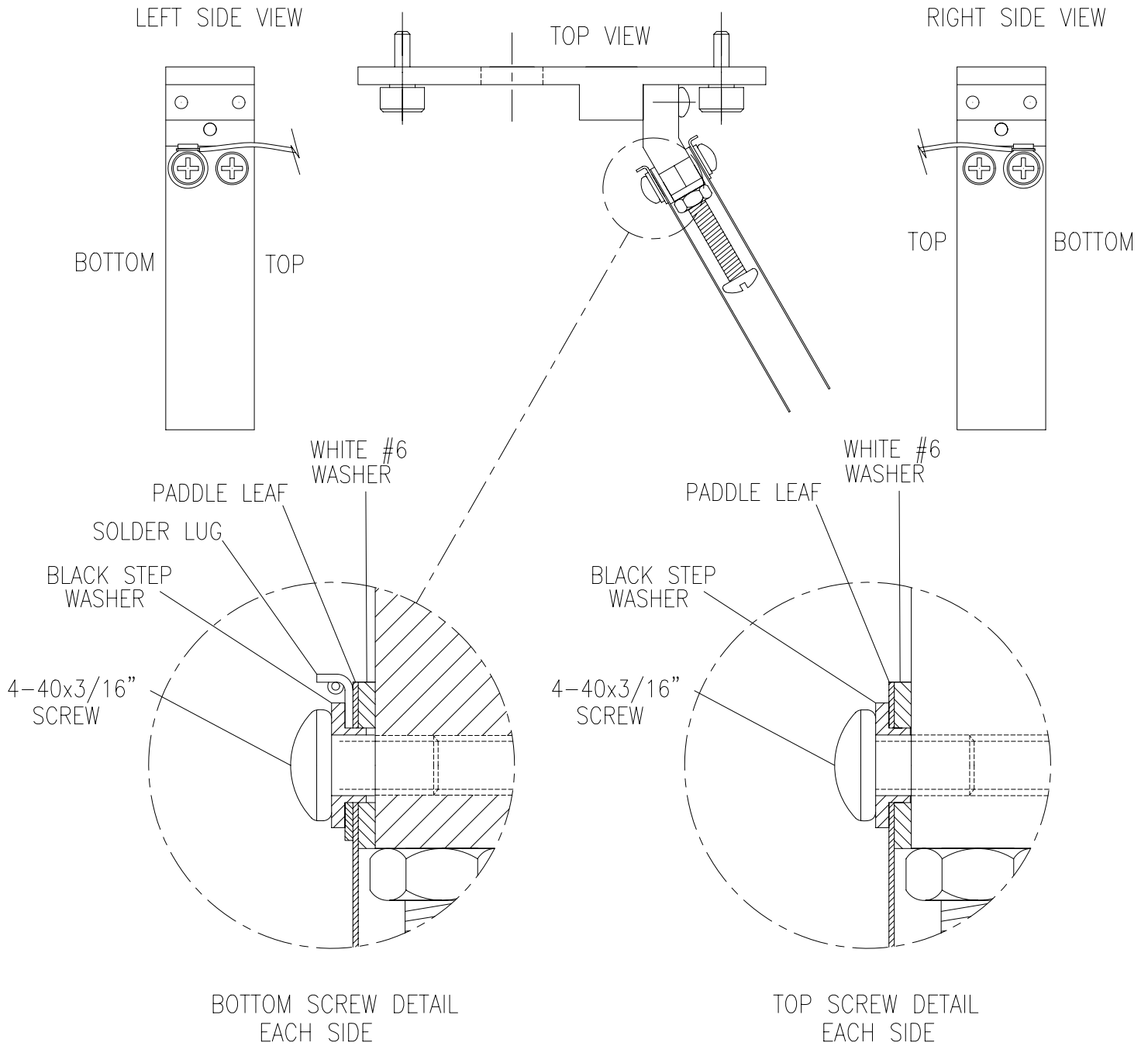
THE PADDLE SUPPORT CAN BE MIRRORED FOR LEFT HAND USERS.

2. SCREW THE 6-32 BINDING HEAD SCREW INTO THE PADDLE SUPPORT, AND SECURE WITH THE 6-32 NUT, TO THE DIMENSION SHOWN. MOUNT THE PADDLE SUPPORT TO THE PADDLE MOUNT ANGLED, USING THE TWO 4-40 X 7/16" PAN HEAD SCREWS AND LOCK WASHERS.



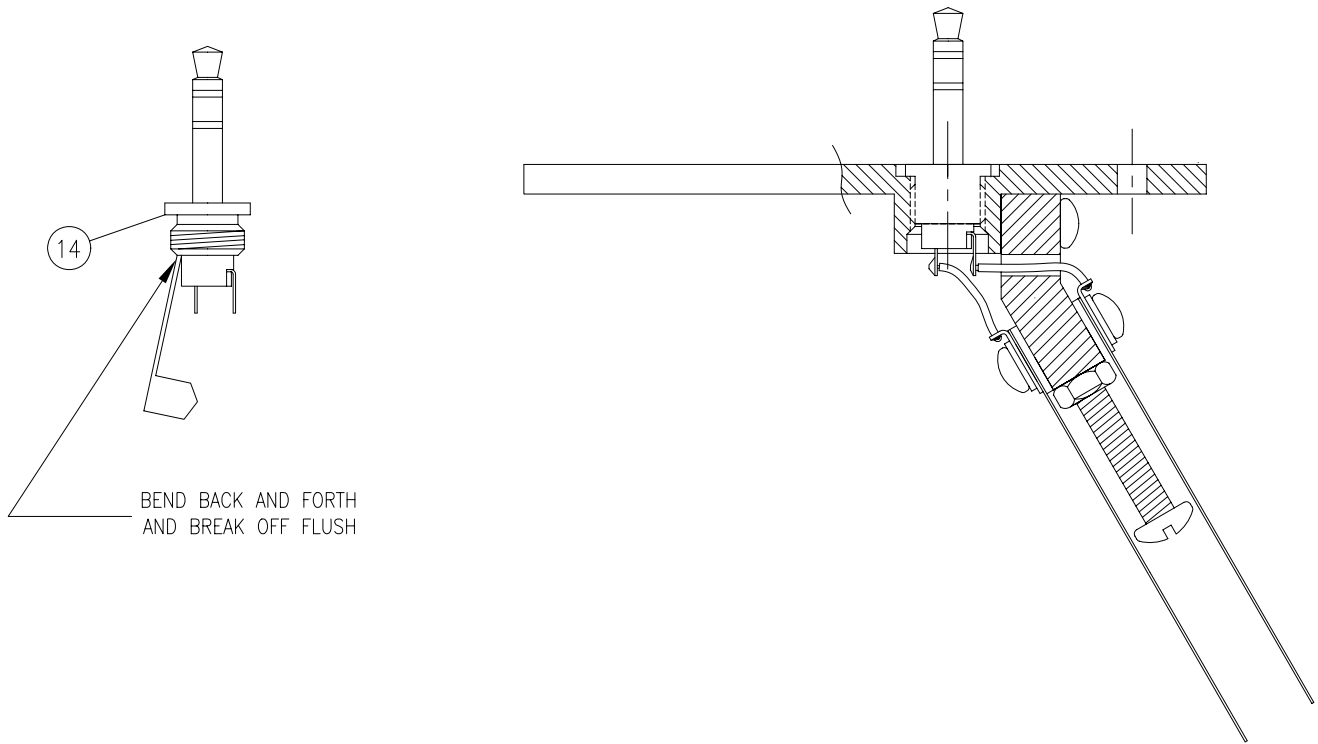
3. BEND THE SOLDER LUG, 90°, TO THE DIMENSION SHOWN. CUT THE SOLDER LUGS DOWN TO 1/16". AT THIS TIME, SOLDER A SHORT PIECE OF THE 26AWG WIRE ON TO EACH LUG, AS SHOWN. SOLDERING HEAT WILL DAMAGE THE NYLON WASHERS LATER.

PFR-3 PADDLE ASSEMBLY

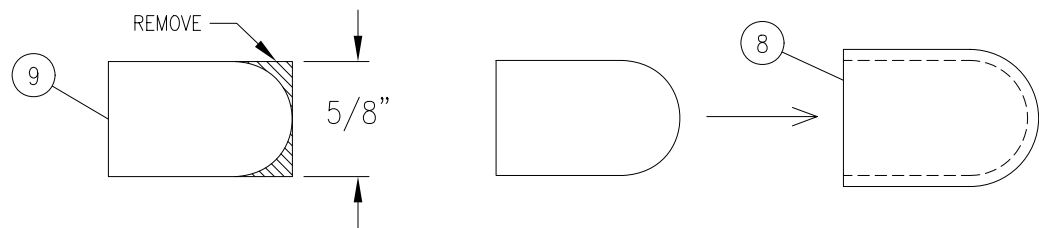


4. IN ORDER FOR THE PADDLE TO OPERATE CORRECTLY, THE EACH PADDLE LEAF MUST BE MOUNTED, INSULATED FROM GROUND. THIS IS ACOMPLISHED BY USING NYLON SPACERS AS SHOWN ABOVE. WHEN YOU ARE COMPLETE, CHECK THAT THERE IS "NO" CONTINUITY BETWEEN THE TWO PADDLES, AND EITHER PADDLE TO GROUND. CHECK THAT YOU "DO" HAVE CONTINUITY BETWEEN THE SOLDER LUG, AND THE PADDLE LEAF. AS YOU CAN SEE THE LUG IS MOUNTED ON THE BOTTOM SCREW, ON EACH SIDE. TAKE YOUR TIME DOING THIS, THESE SPACERS MUST BE MOUNTED AS SHOWN.

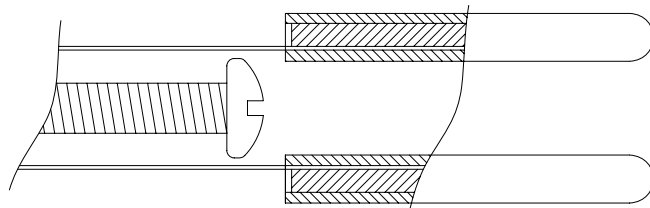
PFR-3 PADDLE ASSEMBLY



5. UNSCREW THE PLASTIC SHELL FROM THE 3.5mm STEREO PLUG AND BREAK OFF THE BARREL GROUNDING TAB. SCREW THE STEREO PLUG INTO THE PADDLE MOUNT, AS SHOWN. ROUTE THE RIGHT PADDLE WIRE THROUGH THE SMALL HOLE PROVIDED. CONNECT THE PADDLE WIRES TO THE TIP AND MIDDLE SLEEVE. THE TIP IS THE "DIT" AND THE MIDDLE SLEEVE IS THE "DAH". IF YOU GET IT WRONG THE FIRST TIME, THERE'S ONLY ONE OTHER CHOICE.

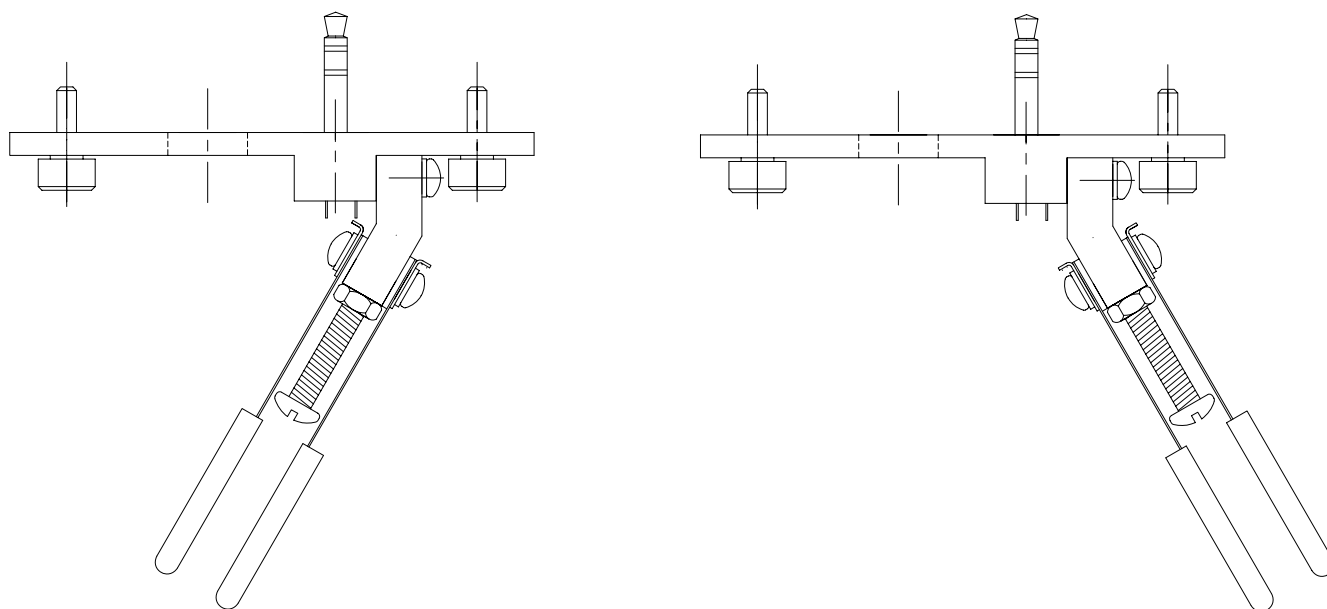


6. FILE A FULL RADIUS ON THE TWO ALUMINUM SHIMS, AS SHOWN, AND SLIDE ONE INTO EACH VINYL SLEEVE CAP.



7. SLIDE THE VINYL SLEEVE ASSEMBLYS, ONTO THE THE PADDLE LEAVES, WITH THE ALUMINUM SHIM TO THE OUTSIDE. NO ADHESIVE IS NECESSARY.

PFR-3 PADDLE ASSEMBLY



8. COMPLETE THE ASSEMBLY BY ATTACHING THE PADDLE TO THE RADIO WITH THE TWO SUPPLIED PLASTIC CAPPED THUMB SCREWS.

9. THE PADDLE CAN BE CONFIGURED DIFFERENTLY TO ACCOMODATE LEFT HANDED OPERATION OR OTHER CLEARANCE SITUATIONS.

