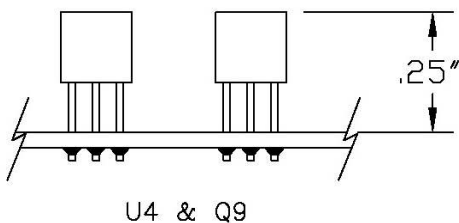


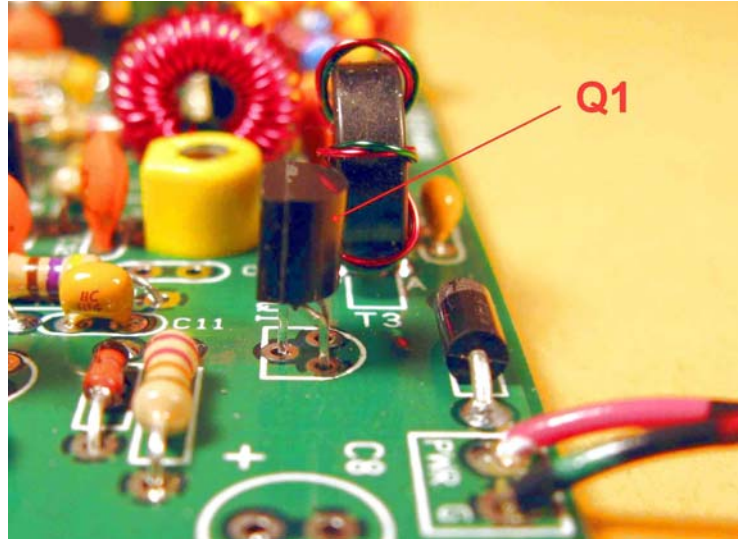
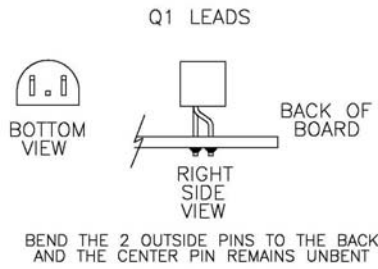
PCB mounting instructions for the DCxxB



Due to the effort to keep the chassis compact, a few construction techniques must be followed. First of all, there is 1/8" clearance between the bottom of the PCB and the inside of the aluminum chassis, so keep your thru leads clipped to prevent shorting to the case.

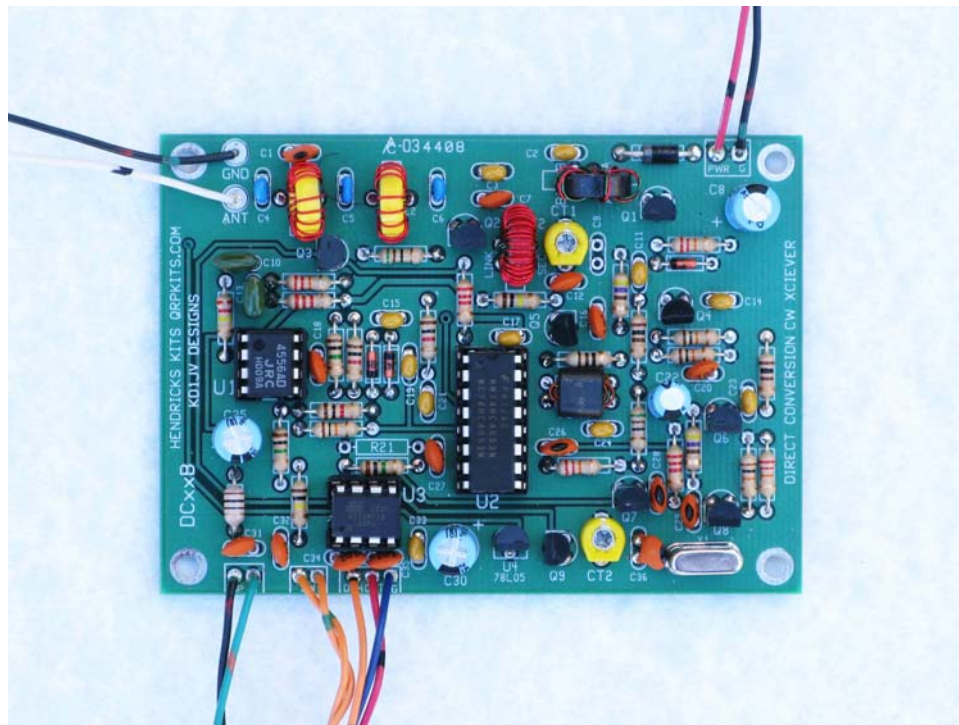


- Two components, U4-78L08 and Q9-2N7000 must be mounted no more than .25" from the top of the component to the surface of the board. This will allow the paddle jack to mount over them.



C8 removed for picture

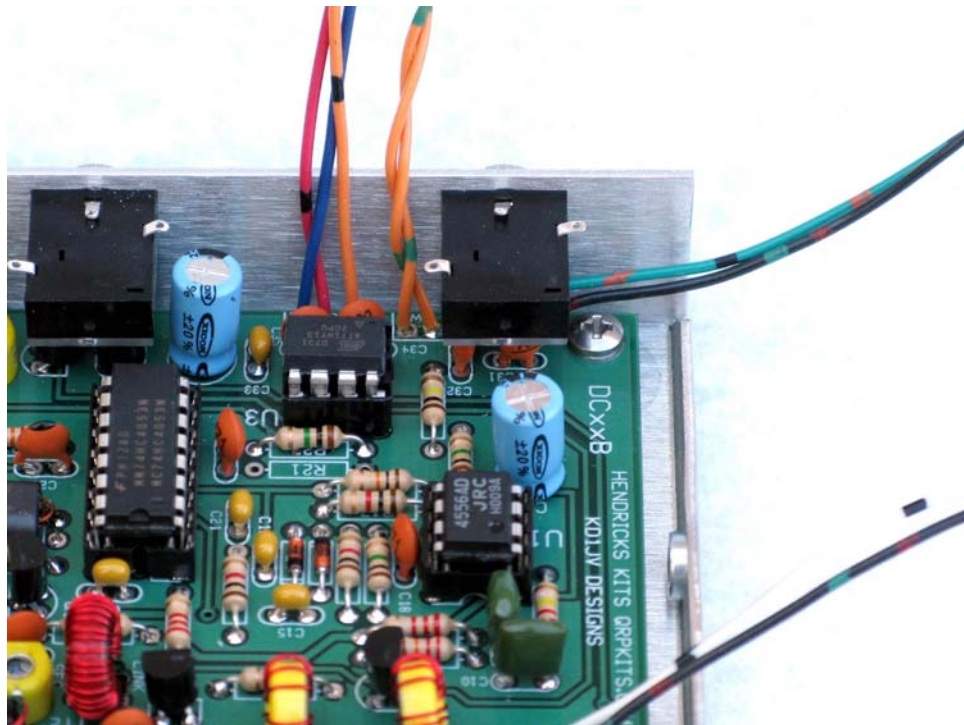
- Q1 is in close proximity to the rear power jack and the leads need to be bent as shown above. This will give the necessary clearance from the power jack.



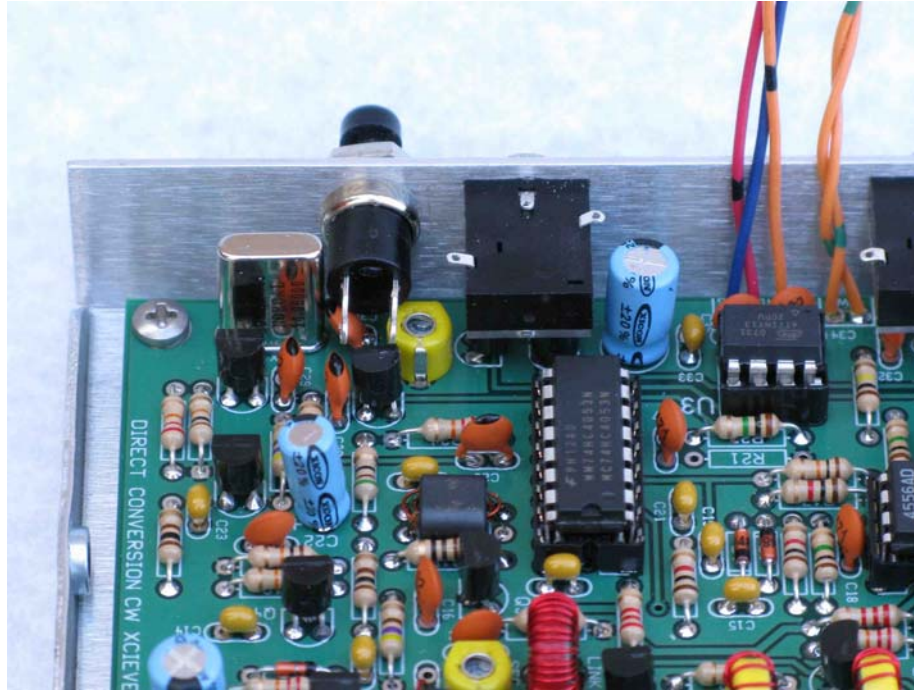
- The board must be complete and tested outside the chassis before the final installation. Solder leads to all the connection points that lead off the board. There are 11 of them.



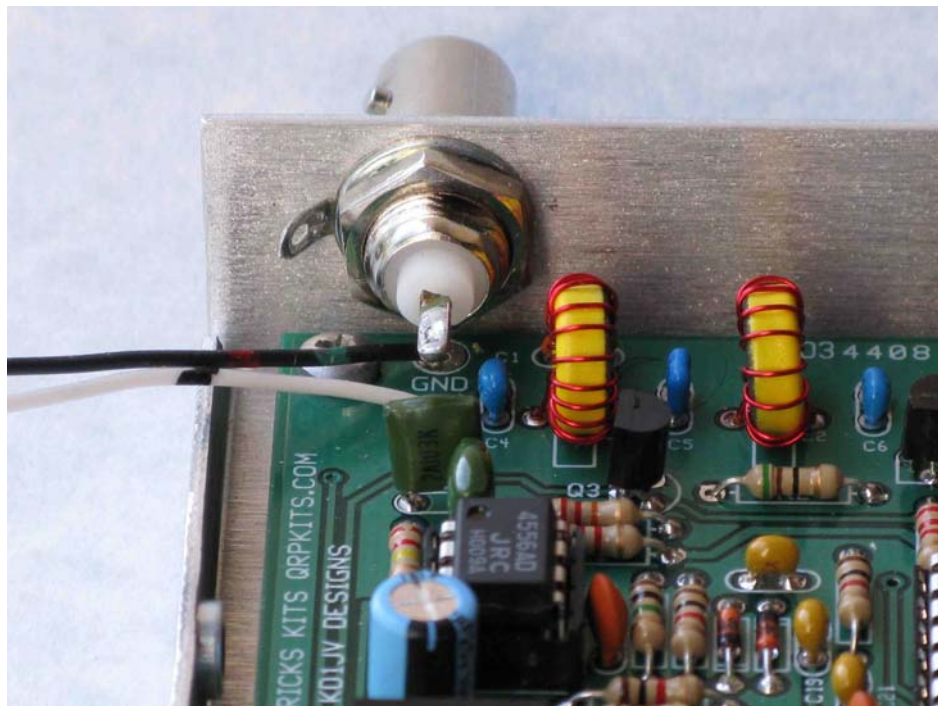
- Mount the PCB into the chassis bottom using the four 4-40 screws.



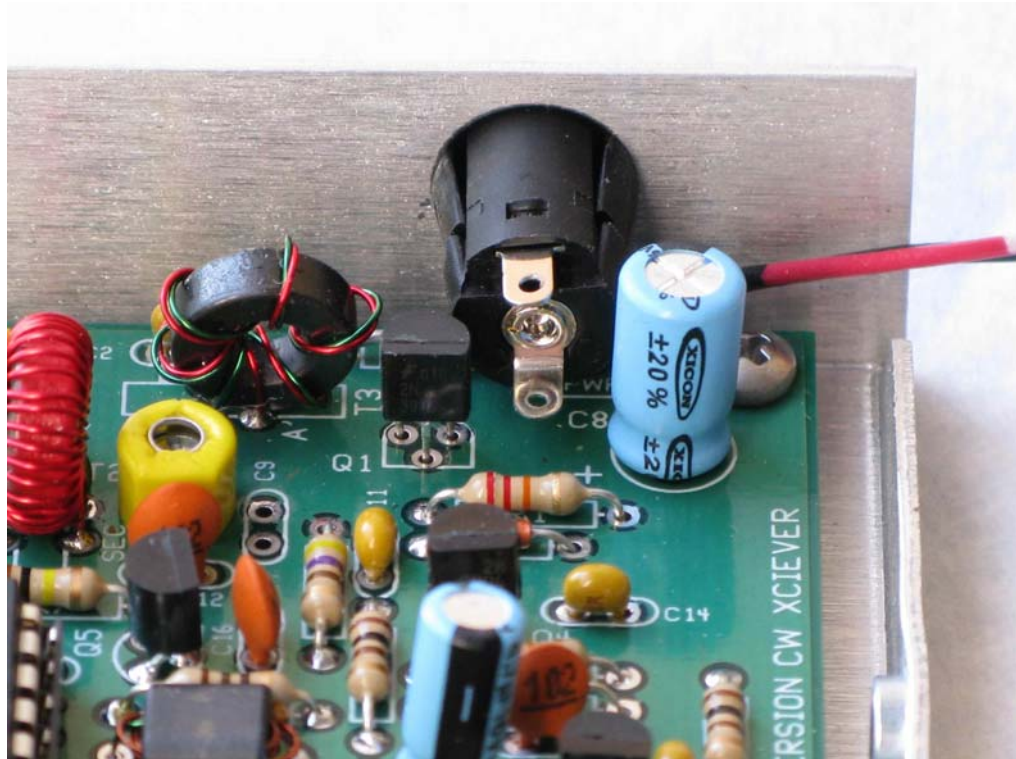
- Install the two 1/8" phone jacks with the terminals facing upward.
- The terminals are laid down flush on the audio jacks to give extra clearance between the cover and the audio jack connections.



- Install the pushbutton switch and secure the front nut and lock washer.



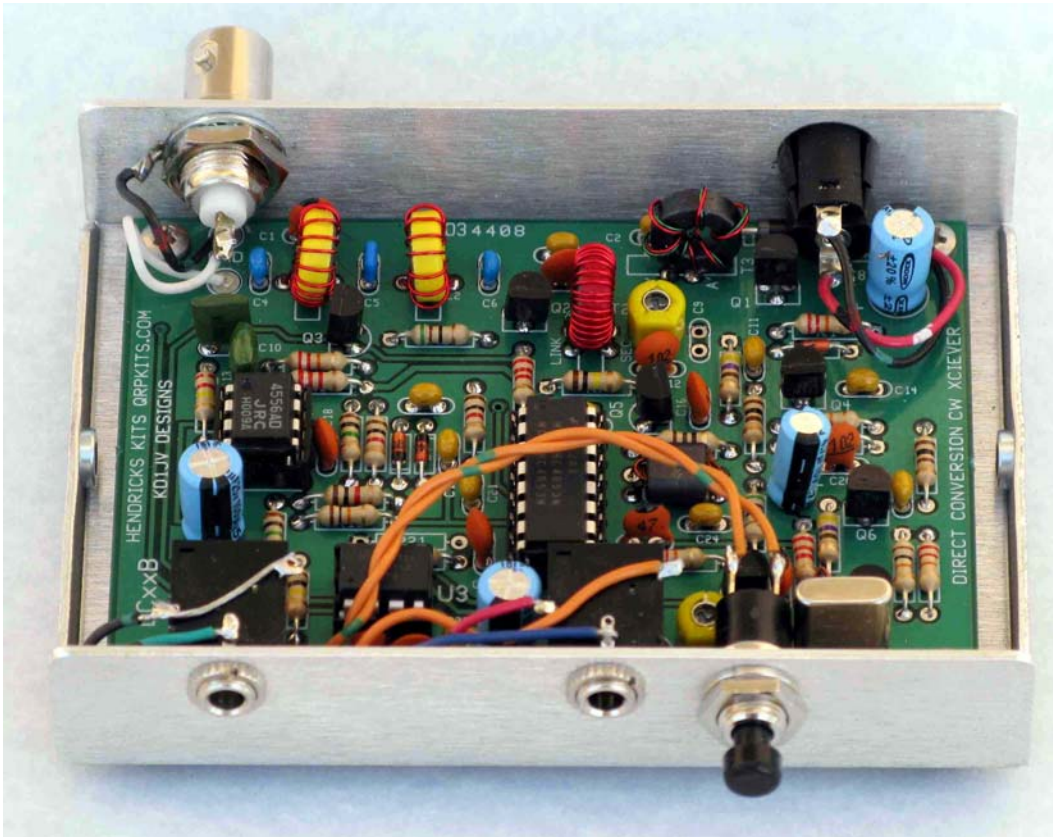
- Install the BNC antenna connector with ground lug, lock washer, and nut.



- Push in the power jack.



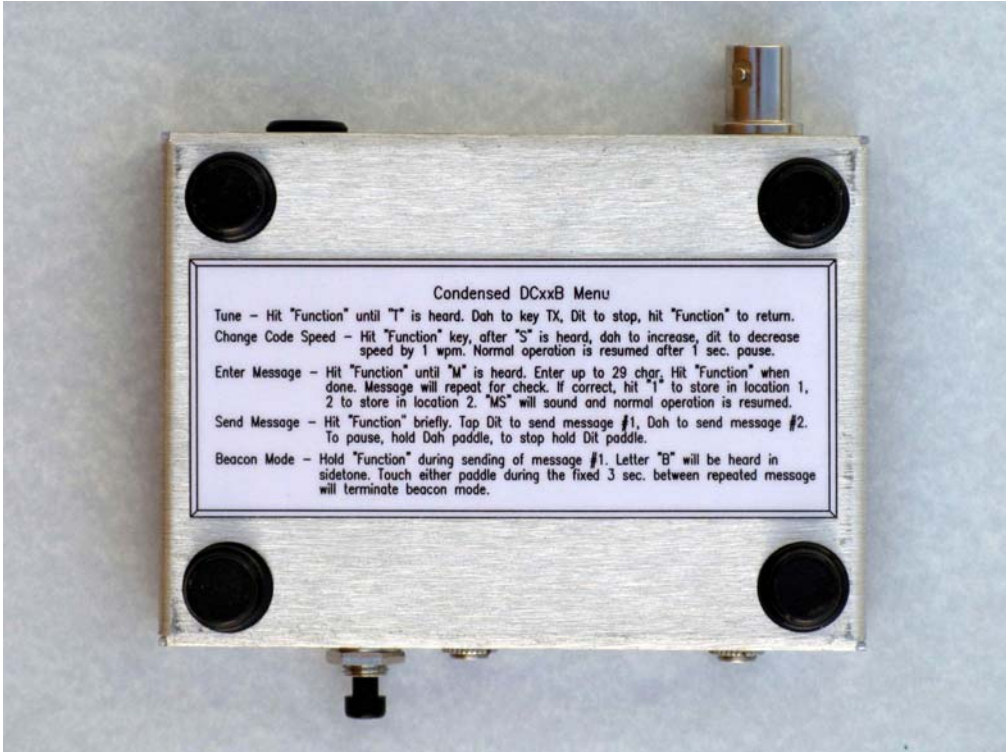
- Connect the 7 loose leads to the front components, using Steve's details on the audio and paddle jack graphics.



- Connect the 4 leads to the antenna and power jack as shown.



- Finally, apply the decals to the cover as described in the tips for decal installation, attach the cover with the two enclosed flat head 4-40 screws, and stick on the 4 rubber feet.



- If you desire, download the abbreviated menu and stick it to the bottom. This one is laminated and applied with two sided tape.